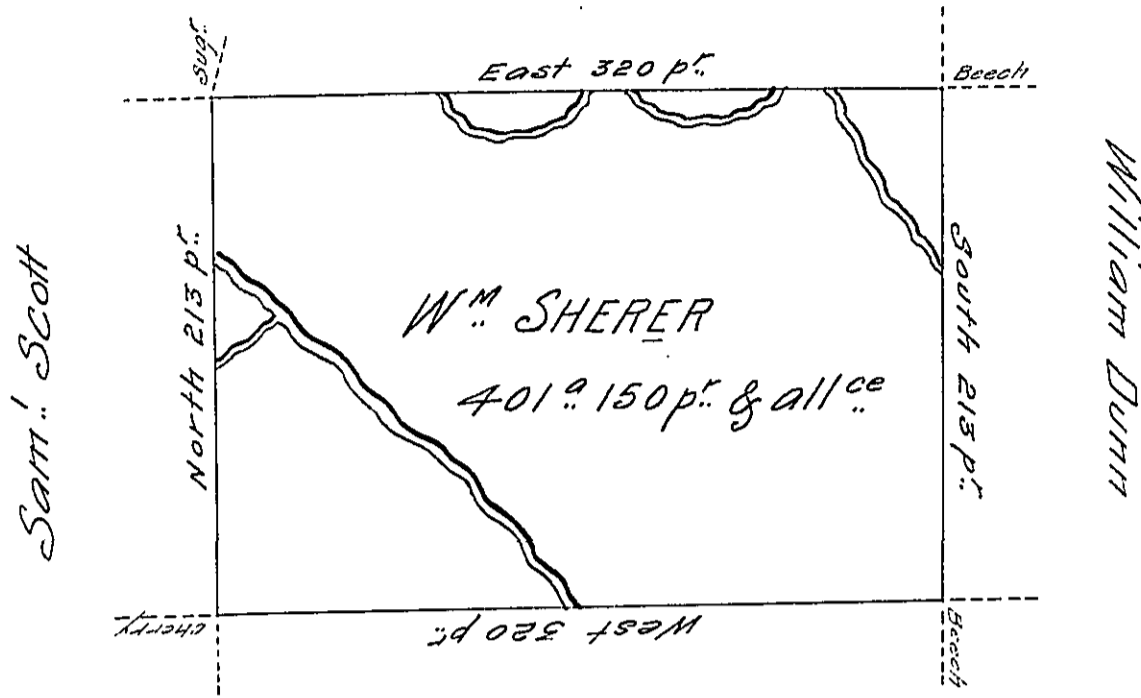


Rob<sup>t</sup>. Irwin



Samuel THOMPSON

Situate on the west side of French Creek in Allegheny County Containing 401 Acres and 150 p<sup>t</sup>. and allowance of Six ~~1~~ Cent for Roads &<sup>ce</sup> Surveyed the 5<sup>th</sup> day of November 1794, In pursuance of his Improvement bearing date the 4<sup>th</sup> day of November 1794.

W<sup>m</sup>. Power D<sup>x</sup>. Sr.

To Daniel Brodhead Esq<sup>r</sup>. }  
 Surveyor General }

IN TESTIMONY that the above is a copy of the original remaining on file in the Department of Internal Affairs of Pennsylvania, made conformably to an Act of Assembly approved the 16th day of February, 1833, I have hereunto set my Hand and caused the Seal of said Department to be affixed at Harrisburg, this fourteenth day of June 1906

*Isaac R. Brown*  
 Secretary of Internal Affairs.